

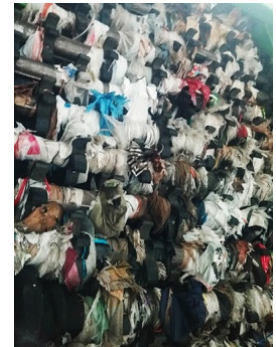
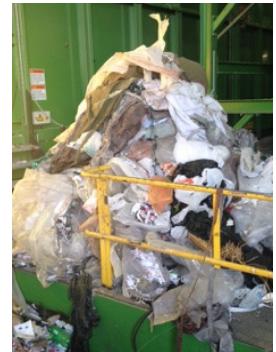
Dear Valued Customer

Important notice - Waste Management's Inbound Recycling Quality Policy

The recycling industry including Waste Management is experiencing high levels of contamination which is unacceptable materials in the recycling. This is coming at a time when the requirements for quality (clean recycling) are increasing due to new policies in China. These policies have banned twenty-four types of materials and include strict quality standards.

In 2017, China began to limit the quantity of material it accepts for recycling and in 2018 added specific contamination limits set at 0.5%. These significant changes are affecting the recycling industry world-wide. **As a result, our focus on quality is higher than ever, as we work to ensure the long-term sustainability of our recycling programs.**

When unacceptable materials (contamination) end up in your recycling loads, they have the potential to turn the entire load into trash and increase processing costs resulting in contamination and/or additional service charges.



IMPORTANT: Moving forward you may be assessed contamination charges of up to \$175.00 per ton and/or increased processing fees for excess contamination found in your loads.*

Please join us in the battle against contamination and make sure when your recycling loads are picked up or delivered to one of Waste Management's transfer stations or a Material Recovery Facility (MRF) they are free of contaminants. Contact your sales representative for more information on what is and isn't acceptable. Eliminating contamination from your material profile provides the greatest value to your material stream, to Waste Management and the environment. We appreciate the efforts you and your organization are making and we look forward continuing to servicing you and your recycling needs. Thank you for your business.

** Charges and fees will be assessed in accordance with contract terms and conditions where applicable.*